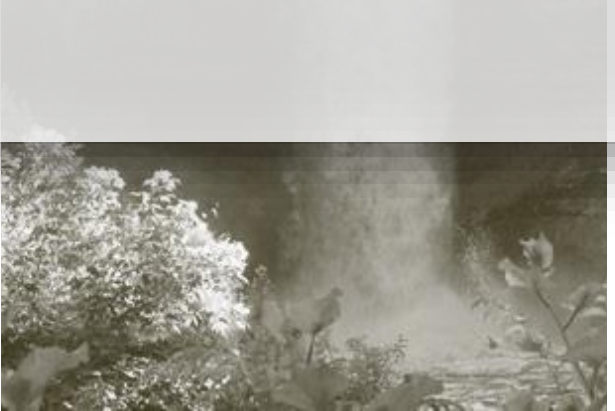



# Arbyan

investment & development



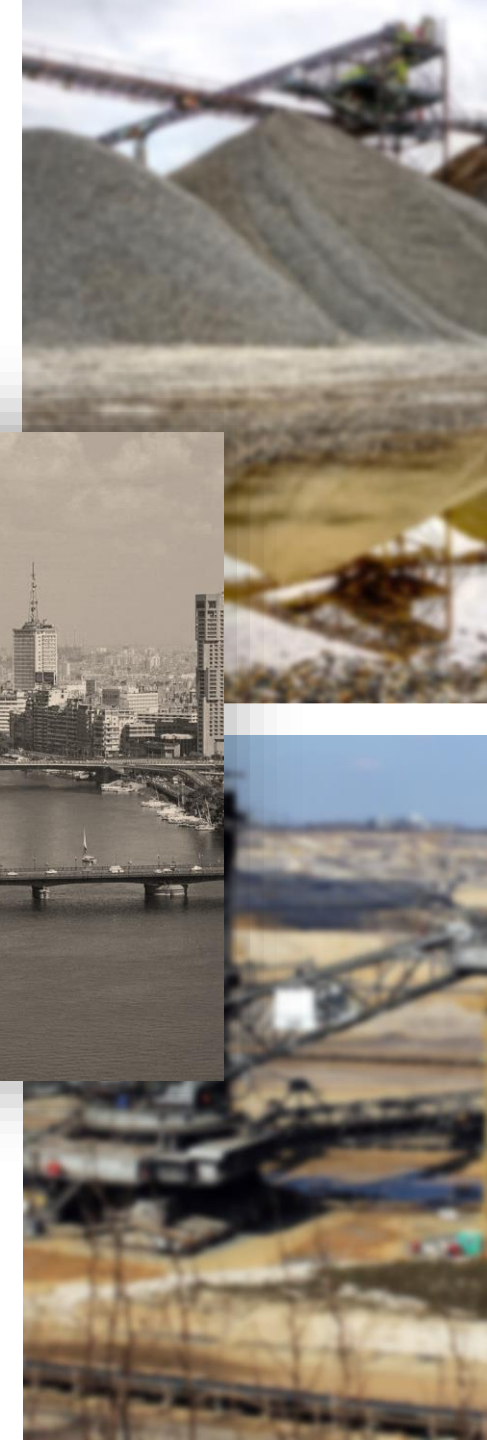
[info@arbyan.com](mailto:info@arbyan.com)

[www.arbyan.com](http://www.arbyan.com)



**Arbyan Investment & Development** established in Cairo, Egypt in 1994 as a Private Shareholding Company (PSC).

We are a general trading company specialised in import and export of fertilisers, mining raw materials, and chemical products.





## Our **Portfolio**



**Fertilisers**



**Raw Materials**



**Chemical Products**



# Fertilisers

## Nitrogen

- Urea
- Ammonium sulphate
- Liquid Anhydrous Ammonia

## Phosphorous

- Phosphoric acid
- D.A.P (Diammonium Phosphate)
- Granular Single Super phosphate
- Granular Triple Super phosphate

## N.P.K



# Raw Materials

**Rock  
phosphate**

**De-Icing Salt**

**Salt**  
(sodium chloride)

**Dolomite**

**Quartz**

**Potash Feldspar**

**Kaolin**

**Lime Stone**  
(calcium carbonate)

**Iron Ore**

# Urea

- ✓ **Prilled** white treated with anti-caking agent

Component	Standards
Nitrogen	46%
Biuret	1% max
Moisture	0.5% max
Grain Size	90 % Min ( 1 – 3.5 mm )

- ✓ **Granules** white treated with anti-caking agent

Component	Standards
Nitrogen	46%
Biuret	1% max
Moisture	0.5% max
Grain Size	90 % Min ( 2 – 4.5 mm )



# Ammonium sulphate

Fertilisers

**Granular Ammonium Sulphate**

Component	Standards
Nitrogen %	20.2
Sulphur %	24, min +/- 0.2
Moisture %	0.5 max
Granulation	< 1.18 mm, 0.75% max < 2 mm, 3.2% max 2-4.5 mm, 90% min



**Crystal Ammonium Sulphate**



# Anhydrous Ammonia

## ☑ Anhydrous Ammonia

Component	Standards
NH <sub>3</sub>	99.94%
Water	0.06%
Oil	2.00 ppm





# N.P.K

## ☑ N.P.K Granules

N.P.K	N%	P <sub>2</sub> O <sub>5</sub> %	K <sub>2</sub> O%	S%
15.15.15	15	15	15	--
19.19.19	19	19	19	--
10.20.20	10	20	20	7
12.32.16	12	32	16	5.8
18.5.10	18	5	10	3.5
12.5.12	12	5	12	4
10.10.10	10	10	10	--

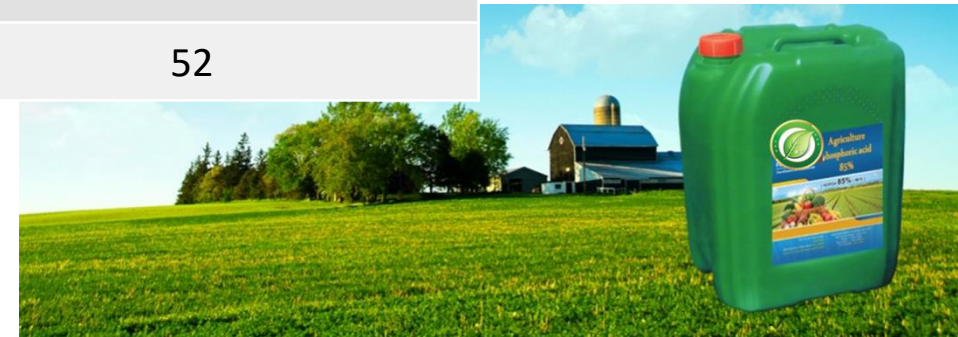


# Phosphoric Acid



Fertilisers

	Industrial grade (in pure concentrated form)	Agricultural grade
Appearance	Transparent liquid	Yellow to green liquid
Packing	25 Kg or client request	25 Kg or client request
Solubility	Soluble in water	Soluble in water
Phosphorous ( $P_2O_5$ )	61	52





# D.A.P (Diammonium Phosphate)

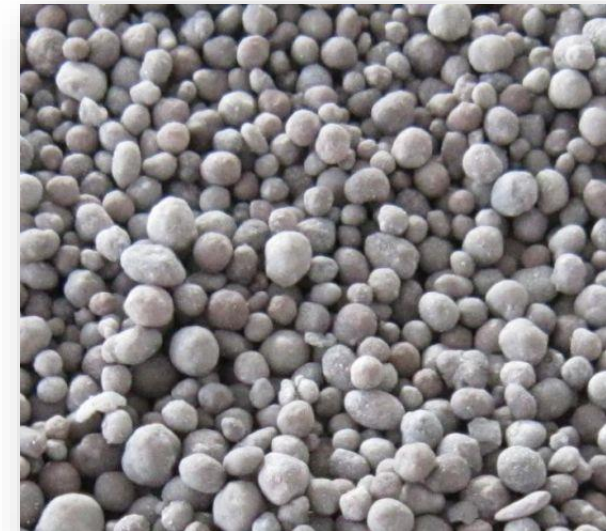
D.A.P	N%	Total P <sub>2</sub> O <sub>5</sub> %	Dissolved P <sub>2</sub> O <sub>5</sub> %	Heavy metals%
18.46.0	18	46	41	0.03



# Granular Single Super Phosphate



Chemical Analysis (typical)	%
Moisture (H <sub>2</sub> O)	3.5
Free Acid as P <sub>2</sub> O <sub>5</sub>	3.5
Water Soluble as P <sub>2</sub> O <sub>5</sub>	17.0
Citrate Soluble as P <sub>2</sub> O <sub>5</sub>	20.0
Total phosphate as P <sub>2</sub> O <sub>5</sub>	21.0
Sulphur	11 % min
Calcium	18 % min
Granulometry	(2-5 mm) 90.0%
Bulk density	1.15 gm/cm <sup>3</sup>
Color	Gray color
PH	3.5
Strength	3.5 Kg/ Granule





# Granular Triple Super Phosphate

Fertilisers

Chemical Analysis (typical)	%
Total P <sub>2</sub> O <sub>5</sub> %	46
Dissolved P <sub>2</sub> O <sub>5</sub> %	37-41
Calcium (CaO)%	12
The appearance	Gray granules
Moisture%	2-3 max
Granules size	1-5 mm not less than 90%



# Raw Materials



**Rock  
phosphate**

**De-Icing Salt**

**Salt**  
(sodium chloride)

**Dolomite**

**Quartz**

**Potash Feldspar**

**Kaolin**

**Lime Stone**  
(calcium carbonate)

**Iron Ore**





# Rock phosphate

## Common uses:

- ➔ Fertilizers Industry & Phosphoric Acid
- ➔ Insecticides Industry
- ➔ Iron & Steel Industry



	32%	31%	30%	29%	28%	27%
Element	Results %					
P <sub>2</sub> O <sub>5</sub>	32	31.5	30.2	29.5	28.30	27.1
CaO	49	50	48	48	45.61	45
MgO	0.3	0.3	0.4	0.4	0.4	0.4
Al <sub>2</sub> O <sub>3</sub>	0.4	0.4	0.4	0.6	0.6	0.8
Fe <sub>2</sub> O <sub>3</sub>	1.9	1.9	2.00	2	2	2.1
SiO <sub>2</sub>	5.5	6.48	8.48	9.0	10.91	12.0
F	3.1	3.1	3.1	3.00	2.70	2.66
Cl	0.05	0.05	0.05	0.06	0.06	0.08
Na <sub>2</sub> O	0.4	0.5	0.50	0.56	0.56	0.56
SO <sub>4</sub>	0.8	1.00	1.8	2.00	2.20	2.1
L.O.I	7.1	7.0	7.5	7.6	7.98	8.5
CO <sub>2</sub>	50.1	5.6	5.6	5.6	6.1	7.0
Humidity	3-4	3-4	3-4	3-4	3-4	3-4
BPL	70%	68%	67%	65.5%	61.87%	64%

# De-Icing Salt

Component	Min %	Max %
Sodium Chloride	98.21	99.21
Moisture	0.039	0.04
Insoluble Matters	0.27	0.28
Sulfate (so4)	0.23	0.24
Magnesium (Mg)	0.049	0.05
Calcium (Ca)	0.089	0.09





# Salt (sodium chloride)

## Rock Salt

- Rod salt / washed salt / refined salt / food salt
- Tablet salt (for water treatment)
- Tablet salt (Food & Medical grade)

## Sea Salt

- Rod salt / washed salt / refined salt / food salt
- Tablet salt (for water treatment)
- Vacuum salt (Food & Medical grade)



# Dolomite

## Common uses:

- Concrete mix industry
- Glass Industry
- Paint industry
- Fertilisers Industry
- Electrical Industry

Chemical Analysis	
CaO	30 - 34 %
MgO	19 - 21 %
SiO <sub>2</sub>	1 % max.
R <sub>2</sub> O <sub>3</sub>	3 % max.
L.O.I 1000- 1100 c°	45 - 49



# Quartz

Chemical Analysis	
SiO <sub>2</sub>	99.6%
TiO <sub>2</sub>	0.00%
Al <sub>2</sub> O <sub>3</sub>	0.02%
Fe <sub>2</sub> O <sub>3</sub>	0.01%
MnO	0.01%
MgO	< 0.01%
CaO	0.10%
Na <sub>2</sub> O	< 0.01%
K <sub>2</sub> O	< 0.01%
P <sub>2</sub> O <sub>5</sub>	< 0.01%
L.O.I	0.12%





# Potash Feldspar

Chemical Analysis	
L.O.I	0.82%
SiO <sub>2</sub>	63.17%
TiO <sub>2</sub>	None
Al <sub>2</sub> O <sub>3</sub>	20.76%
Fe <sub>2</sub> O <sub>3</sub>	0.14%
CaO	0.20%
MgO	0.01%
K <sub>2</sub> O	10.91%
Na <sub>2</sub> O	3.28%



# Kaolin

## Specifications

Type (A) %		Type (B) %	
SiO <sub>2</sub>	50 - 60	SiO <sub>2</sub>	50 - 60
Al <sub>2</sub> O <sub>3</sub>	27 - 30	Al <sub>2</sub> O <sub>3</sub>	27 - 32.5
Fe <sub>2</sub> O <sub>3</sub>	0.8 - 1.3	Fe <sub>2</sub> O <sub>3</sub>	0.8 - 1.2
TiO <sub>2</sub>	1.3 - 2.2	TiO <sub>2</sub>	1.3 - 2.2
CaO	0.10 - 0.25	CaO	0.10 - 0.25
MgO	0.05 - 0.15	MgO	0.05 - 0.15
Na <sub>2</sub> O	0.07 - 0.15	Na <sub>2</sub> O	0.07 - 0.15
K <sub>2</sub> O	0.03 - 0.06	K <sub>2</sub> O	0.03 - 0.06
L.O.I.	10.5 - 11.00	L.O.I.	9.0 - 10.00



# Lime Stone (calcium Carbonate)

Chemical Analysis	
CaCO <sub>3</sub>	99.3
CaO	56.06
MgO	0.01
Fe <sub>2</sub> O <sub>3</sub>	0.001
Al <sub>2</sub> O <sub>3</sub>	0.001
SiO <sub>2</sub>	0.001
L.O.I	43.89
Rock size	< 5- < 15 cm
Powder sizes	0.5 μ - 20 μ
Color	White





# Iron Ore

TUV Analysis (%)	
Fe <sub>total</sub>	56
FeO	0.77
Fe <sub>2</sub> O <sub>3</sub>	79.22
Fe <sub>metal</sub>	--
Al <sub>2</sub> O <sub>3</sub>	1.48
SiO <sub>2</sub>	8.09
CaO	4.53
MgO	0.12
MnO	0.11
S	0.02
SO <sub>3</sub>	0.05
P <sub>2</sub> O <sub>5</sub>	2
P	0.87
Cl	0.04
BaO	001
ZnO	0.02



# Polymers

Raw Materials



Polyethylene Resin



Polyethylene



Polyethylene Chloride  
Resin



# Polyethylene Resin



Raw Materials

## Blowing Molding

### High Density Polyethylene Resin

- EM-4810-AAH
- EM-4925-AAH
- EM-5333-AAH

## Cast Film

### Linear Low Density Polyethylene Resin

- 172EE-1801-AAB
- 173EE-1801-BSB
- 174EE-1802-AAB
- 175EE-1802-BSB
- 283EE-1801-AAH
- 284EE-1802-AAH

## Injection

### High Density Polyethylene Resin

- EM-5204-UVH

## Roto Molding

### Medium density Polyethylene Resin

- EM-3405-UVH

## Blown Film

### Linear Low Density Polyethylene Resin

- 172EE-1801-AAB
- 172EE-1801-AAB
- 173EE-1801-BSB
- 174EE-1802-AAB
- 175EE-1802-BSB
- 283EE-1801-AAH
- 284EE-1802-AAH

### High Density Polyethylene Resin

- bEE-4909-AAH
- EE-4811-AAH

### Medium Density Polyethylene Resin

- EE-3914-AAH

## Tape Mono Filament

### high density Polyethylene Resin

- 240EE-5001-AAH

## Pipe Extrusion

### Bimodal high molecular weight, high density Polyethylene Resin

- bEE-4906-AAH

**Availability:** These products are supplied in 25 Kg bags in secured pallets of 60 bags. also can be Supplied in jumbo bags of 1000 Kg capacity



# Polypropylene



## Fiber

- Fiber-Grade-FB12
- Fiber-Grade-FB25
- Phenol-Free-Fiber-Grade-FFF27
- Spunbond-Grade-SB25
- Spunbond-Grade-SB35

## Injection

- Mold-Grade-MD12
- Mold-Grade-MD35

## Film

- BOPP-Film-Grade-FM03
- TWQ-Film-Grade-FM10

## Raffia

- Raffia-Grade-RF03
- Raffia-Grade-RF05

**Availability:** These products are supplied in 25 Kg bags in secured pallets of 60 bags. also can be Supplied in jumbo bags of 1000 Kg capacity

# Polypropylene Chloride

(S-PVS Resin)



Raw Materials

K-Value	Inherent Viscosity	Porosity	Bulk Density	A.P.S	Heat Loss	Residual VCM
		m1/gm	gm/m1	micron	%max	ppm
67	0.90-0.94	0.20-0.32	0.49-0.56	150-170	0.3	1

**Availability:** These products are supplied in 25 Kg bags in secured pallets of 60 bags. also can be Supplied in jumbo bags of 1000 Kg capacity

# Chemical Products

Chlorine Gas  
Hydrogen Gas  
Oxygen

- Ammonium Nitrate
- Caustic Soda (48% - 50%)
- Caustic Soda Flaks
- Hydrochloric Acid
- Sodium Hypochlorite
- Phosphoric Acid
- Nitric Acid
- Sulfuric Acid
- Hydrogen Peroxide
- Potassium Silicate
- Styrene
- Poly Styrene
- Sulphonic Aside

- Calcium Chloride
- Sodium Chloride
- Copper Sulfate
- Solid Alum
- Calcium Chloride
- Zinc Ammonium Chloride
- Zinc Chloride
- Zinc Dust
- Zinc Oxide
- Magnesium Sulfate
- Sodium Silicate
- Acetic Acid
- Glacial Acetic Acid 99%





[www.arbyan.com](http://www.arbyan.com)



[info@arbyan.com](mailto:info@arbyan.com)



+20 10 1076 4338  
+44 7 500050416



+2010 0000 3569



<https://www.linkedin.com/company/arbyan>



@arbyaninvest